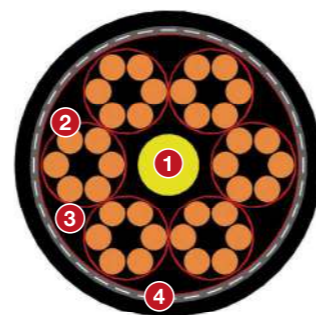


UTVFLEX® - BASKET 0,6/1KV

3GRDGÖU – WITHOUT BALLS ROPES

Control cable specifically designed for gravity-feed collector baskets of latest generation high-speed container cranes. In order to avoid cable damages, the cable must be installed into the basket in counter-clockwise direction, free of torsion.



- 1 CENTRAL SUPPORT ELEMENT**
MATERIAL: Made of aramidic yarns
To be used as support element with a minimum tensile strength of 10 kN
- 2 PHASE CONDUCTOR**
MATERIAL: Tinned copper conductor, specially designed for mobile application
CONSTRUCTION: flexible cl. 5 IEC 60228
- 3 INSULATION**
MATERIAL: EPR compound better than 3GI3, specially developed compound with improved mechanical characteristics
- 4 SHEAT**
MATERIAL: Special CPS compound, high density specially developed compound UV resistant, lubricants resistant

ELECTRICAL WORKING DATA

Nominal rated voltage U_0 / U	kV	0,6/1
Max AC voltage	kV	3,5
Current rating	A	According to VDE 0298 Part 4

THERMAL WORKING DATA

Maximum short circuit temperature	°C	250
Maximum working temp. on the conductor	°C	90
Minimum ambient temperature*	°C	Mobile condition: -25 Static condition: -40

* Upon request UTVFLEX® BASKET 0,6/1KV special version for low temperature (up to -40°C in mobile application)

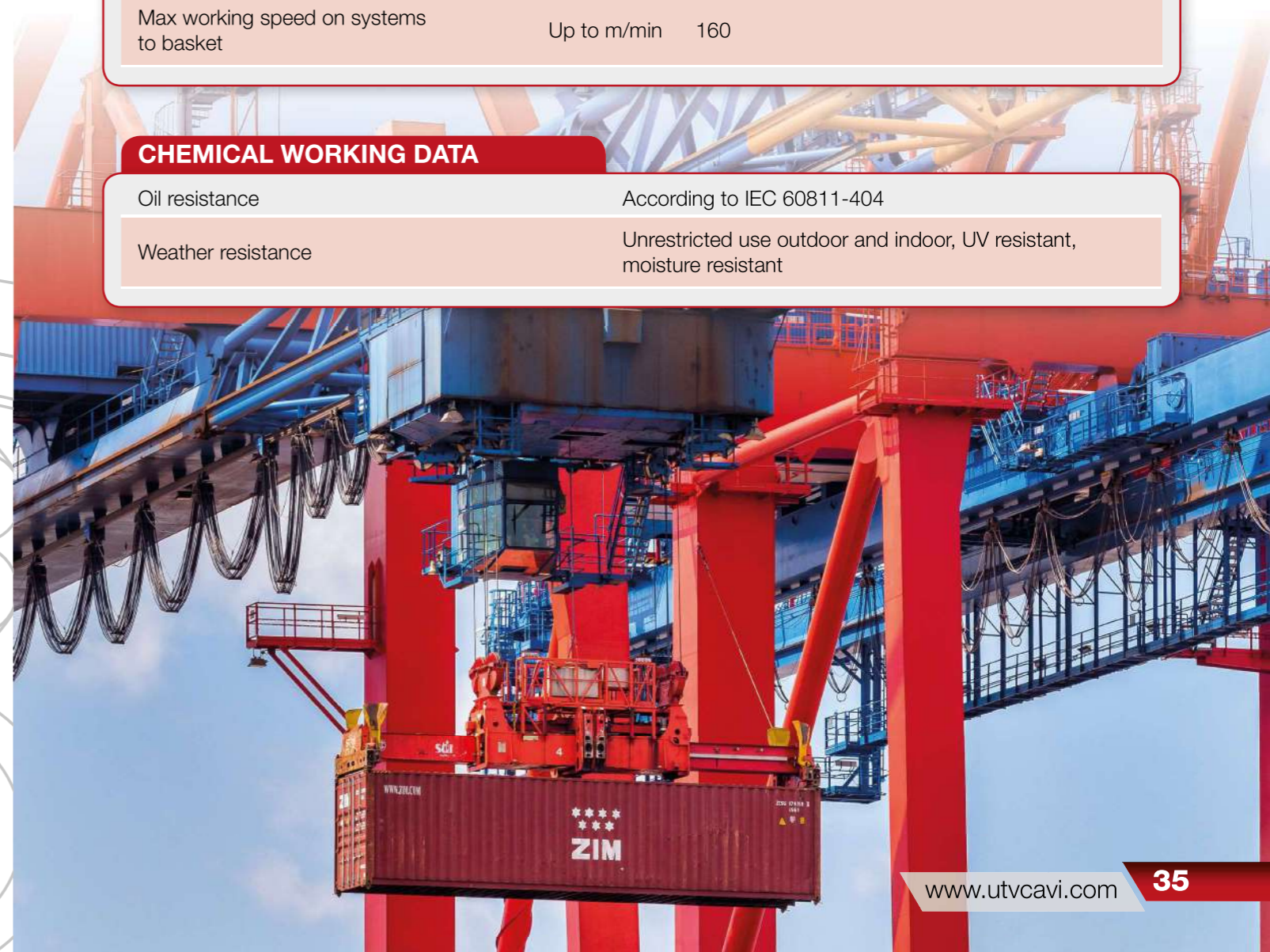
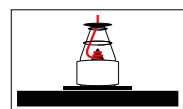
MECHANICAL WORKING DATA

Bending radius	mm	According to VDE 0298 Part 3
Maximum tensile load	Up to 15N/mm ²	with minimum 4000N
Max working speed on systems to basket	Up to m/min	160

CHEMICAL WORKING DATA

Oil resistance	According to IEC 60811-404
Weather resistance	Unrestricted use outdoor and indoor, UV resistant, moisture resistant

APPLICATION



UTVFLEX® - BASKET 0,6/1KV

VOLTAGE kV	CORES X CROSS SECTION Nr x mm ²	MIN OVERALL Ø mm	MAX OVERALL Ø mm	APPROX WEIGHT kg/km	MAX TENSILE LOAD N	
0,6/1	36x2,5	(6x6x2,5)	39,1	43,1	2.790	4000
0,6/1	42x2,5	(7x6x2,5)	43,0	47,0	3.260	4000
0,6/1	48x2,5	(8x6x2,5)	46,4	50,4	3.690	4000
0,6/1	54x2,5	(9x6x2,5)	50,1	54,1	4.280	4000
0,6/1	36x3,3	(6x6x3,3)	42,7	46,7	3.380	4000
0,6/1	42x3,3	(7x6x3,3)	47,1	51,1	3.980	4000
0,6/1	48x3,3	(8x6x3,3)	51,2	55,2	4.560	4000
0,6/1	54x3,3	(9x6x3,3)	55,5	59,5	5.310	4000

The diameter and weight shown is approximate, they may have some tolerance (to be confirmed when ordering). Other cross sections and colors available upon request.

